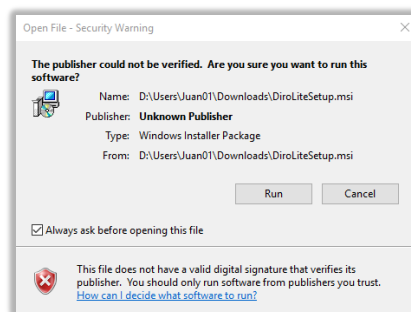
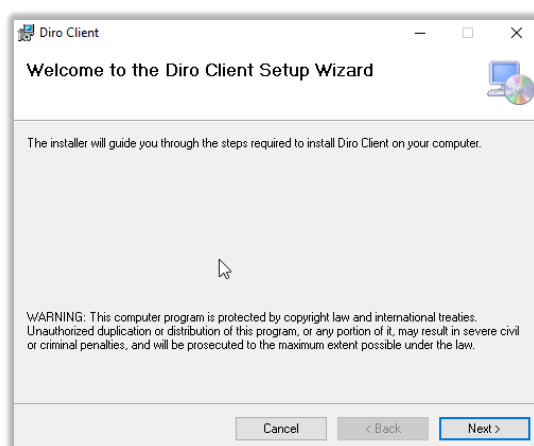


Diro Client Setup Instructions (Windows 7,8,10):

- You can download the Diro Client at the following link <http://www.mydiro.co.za/index.php/downloads>
- After the Diro Application has successfully been downloaded you can start the Installation process by opening the “**DiroClientSetup.msi**” file.
- If you receive the following “**Security Warning**” notification click on the “**Run**” Tab to proceed, if you did not receive the “**Security Waring**” notification continue onto the next step.

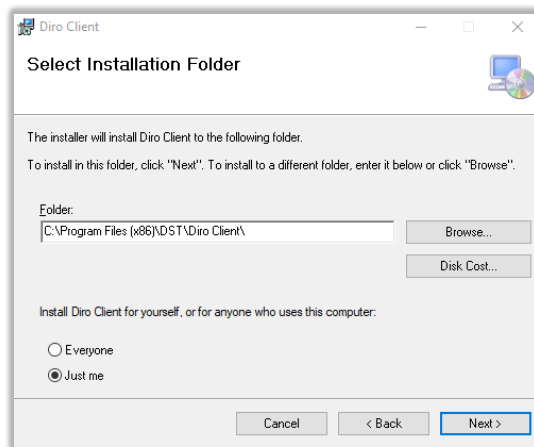


- At the “**Welcome to the Diro Client Setup Wizard**” screen click on the “**Next**” Tab to proceed with the Installation.

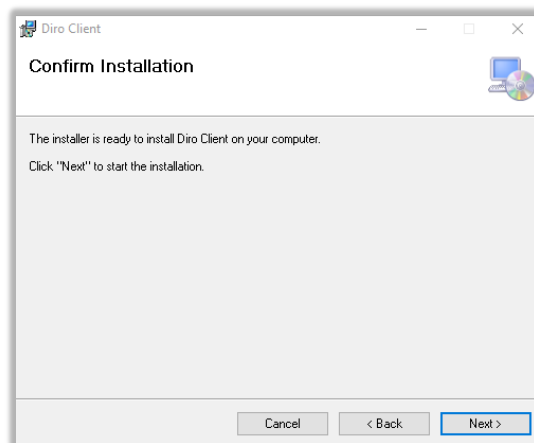




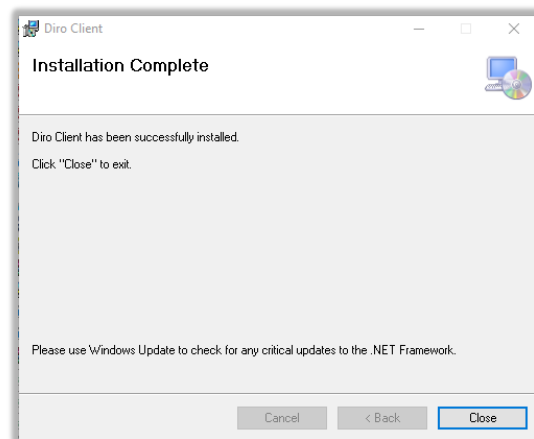
- At the **“Select Installation Folder”** screen leave everything as Default and click on the **“Next”** Tab to proceed with the Installation.



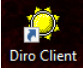
- At the **“Confirm Installation”** screen click on the **“Next”** Tab to proceed with the Installation.

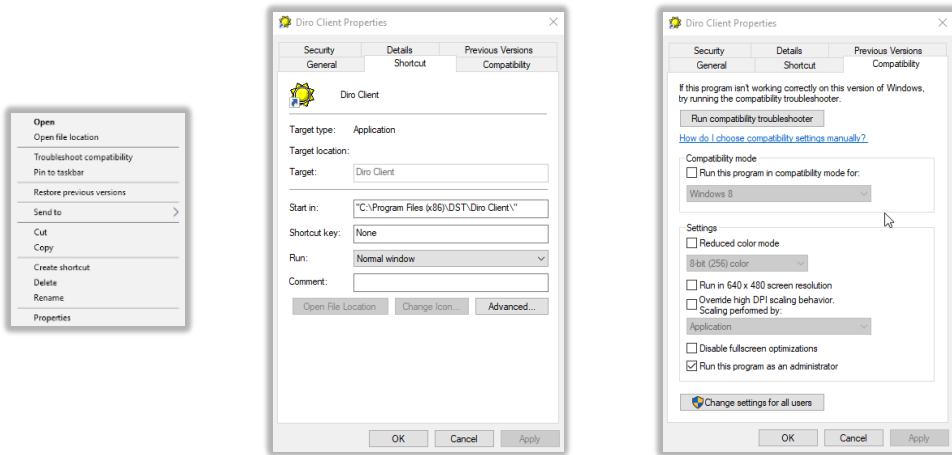


- Finally, at your last screen **“Installation Complete”** click on the **“Cancel”** Tab to Exit.



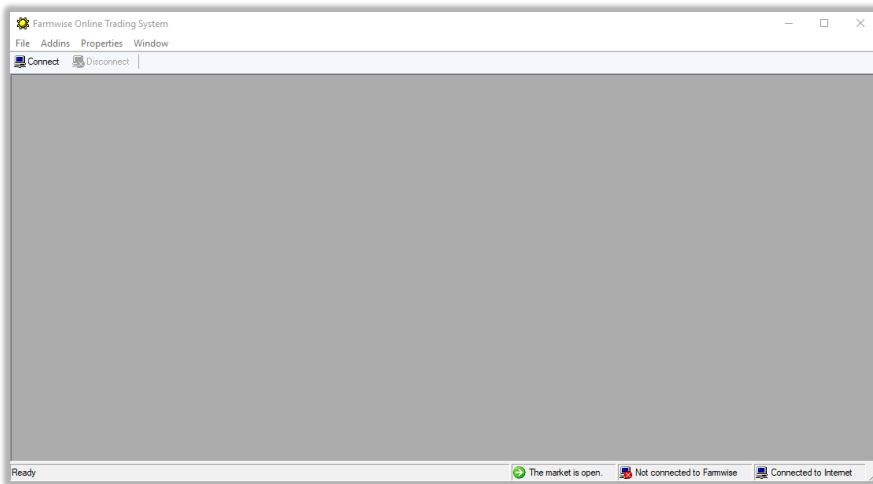


- Locate the **“Diro Client”** Icon  on your Desktop, **“Right click”** on it and click on **“Properties”**. At the **“Diro Client Properties”** screen click on the **“Compatibility”** Tab and Tick the box **“Run this program as an administrator”** followed by clicking on **“Apply”** and

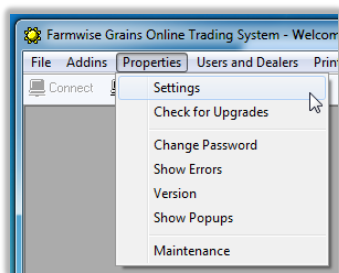


then **“OK”**.

- Now you can double click on the **“Diro Client”** Icon  to start the Application.

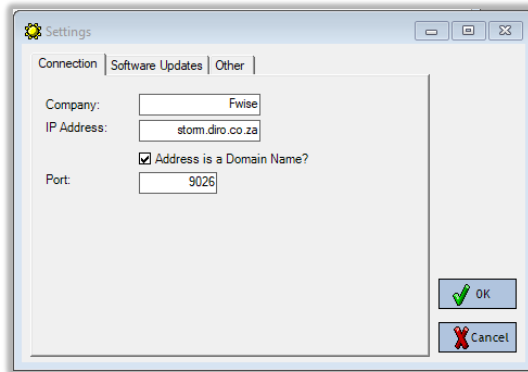


- At the top left corner click on **“Properties”** and then **“Settings”**.

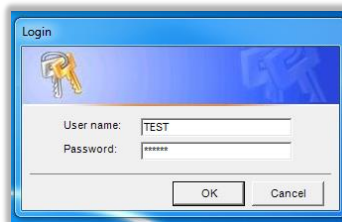




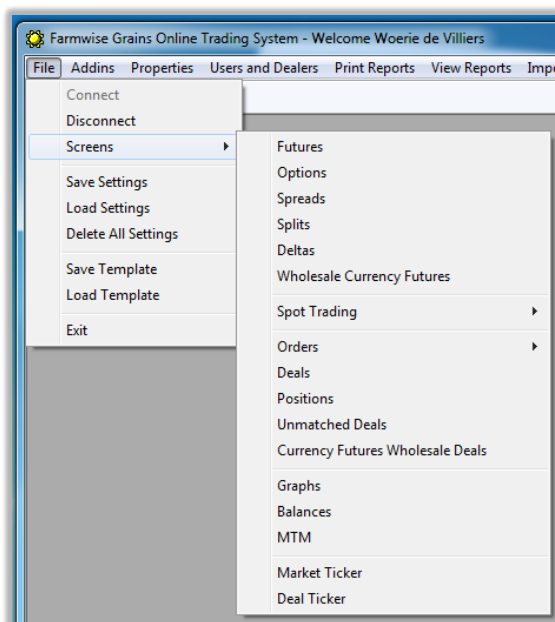
- Complete the “**Settings**” screen as follow and then click on the “**OK**” Tab when done:
 - Company: **Fwise**
 - IP Address: **storm.diro.co.za**
 - Address is a Domain Name?: **Tick the box**
 - Port: **8020**



- At the top left corner click on “**Connect**” and fill in your “**User name**” and “**Password**”. (Username and Password is case sensitive, password must be at least 6 characters)



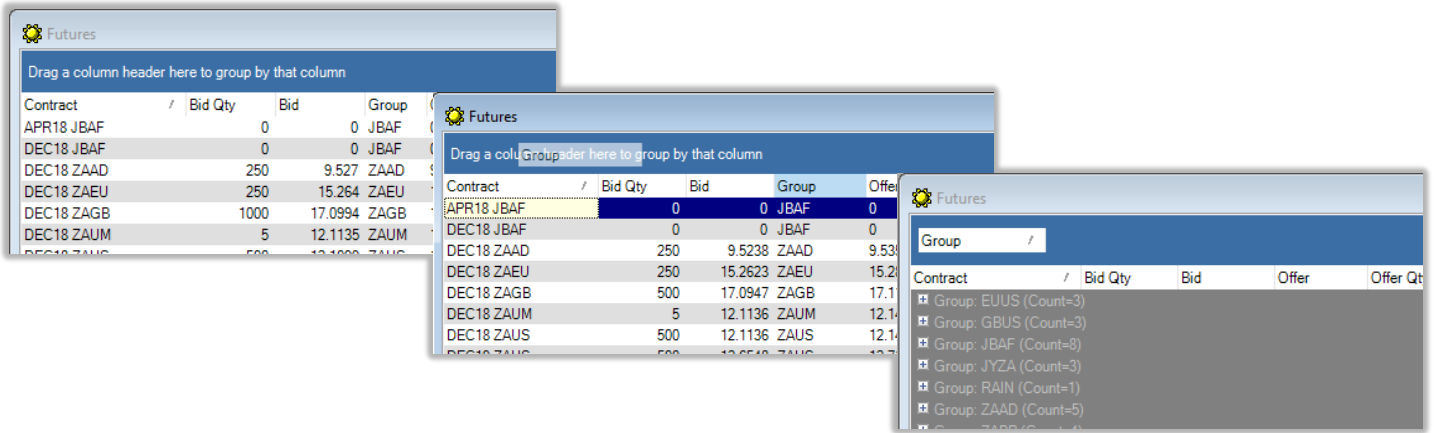
- After you have connected successfully you need to open a Life Trading Screen, at the top left corner click on “**File**” then “**Screens**” and then “**Futures**” to open the Futures Trading Screen. (Repeat these steps to open the “**Options**”, “**Spread**”, “**Splits**” and “**Delta**” screens ext.)



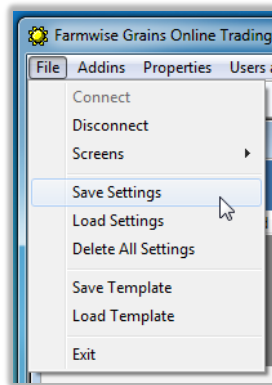
DIRECTORS



- You can customize the screens as required by Dragging a column header to the top dark blue ribbon which says “Drag a column header here to group by that column”



- Once your screens have been setup go to “File”, “Save Settings” in order to Save your screen layouts.



IT Related:

Please make sure that the following can pass thru your Private/Companies Firewall/DMZ/Anti-Virus if the iPad is connected on a wireless access point!

- Open port 8020 - 8022
- IP address - 41.181.46.201 / trade.fwise.co.za
- Updates - <http://www.goey.co.za/webservices/exissoftware.asmx>

For any support please contact Gyro IT.

Tel: 011 787 3666

Email: it@gyrotrade.co.za

Remote Support: <https://get.teamviewer.com/gyroit>

